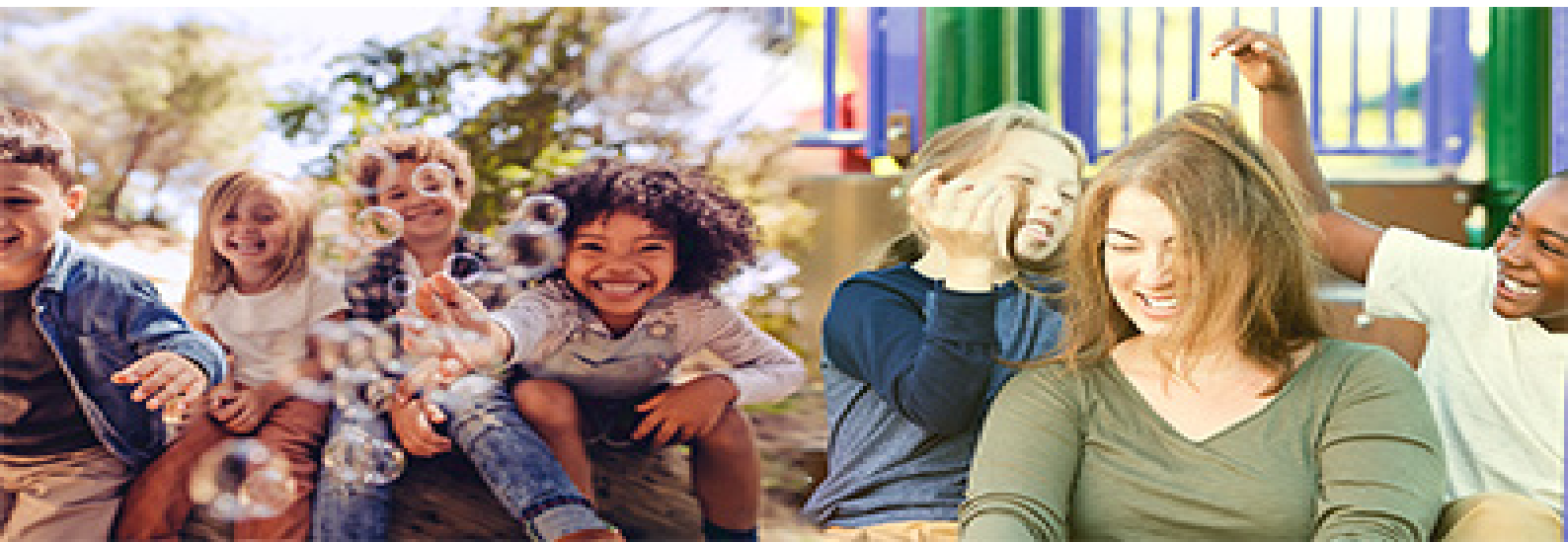




# Annual Report 2019

**CHILD** *link*

Linking Children and Families



## OUR MISSION

At Child Link, we strive to make human services available to all children and youth in need of support.

## VISION

We strive to provide:

- Comprehensive child protective services
- Individual, family and group counseling
- Information and referral services in conjunction with all agency services
- Support services for children and adolescents

Our administrators at Child Link, through a contract with the Illinois Department of Children and Family Services, strive to make sure every child has a safe, loving environment in which to grow and experience all that life has to offer them. We offer adoptions, foster care, transitional living services, and youth counseling.



## OUR SERVICES

- **Adoption** / Infants & Youth
- **Foster Care** / Traditional & Relative
- **Counseling** / Family & Individual
- **Transitional Living** / Old Adolescent

In 2019, Child Link served more than 380 children and young adults throughout the Chicago area.

## BOARD OF DIRECTORS

**Chair**

Dan Palmer, CIBC

**Treasurer**

Anthony Spears, Hunter's Realty, Inc

**CEO**

Malia Arnett

**CFO**

Elta Hebipasi

Mary Maltese, Village of Schiller

Timothy Trela, Momentum Advanced Planning

Lisa Raatz, LMR Communications

## CORE VALUES

### EDUCATION

Counseling for careers and higher education

Ensuring academic success with positive

### SAFETY

Providing emergency on-call support 24/7

Monitoring each child's progress and security

### STABILIZATION

Maintaining family ties through sibling visits

Being attentive to permanency

### FUN

Preserving childhood traditions

Participating in child and teen activities

## ADOPTION



Finding a “forever home” for the children in our care is a primary objective at Child Link. We coordinate no-fee adoption services for prospective parents, through our foster-to-adopt program, following thorough background checks and home studies.

We consistently out perform similar agencies throughout Cook County in providing permanency through adoption or guardianship. We ensure that our children are placed in the best possible family situation providing each child the opportunity to thrive.

Before we begin adoption proceedings, Child Link investigates each child’s status regarding family placement options to avoid unplanned future disruptions.

## FOSTER CARE

Child Link provides foster care to children in Cook, Will and DuPage counties in Illinois. Our foster care program finds homes for children who lack stable support systems.

In 2018, our foster care team grew from 18 to 33 case managers, who partnered with more than 200 licensed foster homes. We now are able to serve more children with the quality of care they need and deserve.



### **Becoming a Foster Parent**

If you are interested in becoming a foster parent, our Licensing Department will work with you to complete the required free training and help you obtain a foster care license. After training and licensing are complete, children can be placed in your home.



### **Adolescent Foster Care**

We work with teenagers and young adults, ages 12-21, who are at risk due to negative environmental influences. They often suffer from traumatic experiences and lack positive adult influences or role models.

The young adults in this program receive services that promote stable relationships, protect them from victimization, and help them develop healthier life habits and goals.

Our program provides the support necessary for them to graduate high school, attend college, and build long-term positive relationships.

## COUNSELING

In 2019, over 100 children throughout the Chicago land area received services through Child Link's counseling program. The children we serve are directly and indirectly impacted by violence or abuse. Child Link works relentlessly to remove and protect them from these environments.

Our licensed counselors work with our children on enhancing social skills, anger management, self development, and family and peer relationships. They counsel those who are victims of violence and bullying, and/or struggle as a result of substance abuse, pregnancy and self harm.

Counselors evaluate the needs of each child and work with him/her in preparing a treatment plan. They provide these children with the tools and resources they need to develop useful behaviors and habits they can use throughout life. Group and family therapies are available in addition to referrals for other needed care.

## TRANSITIONAL LIVING



We assist young women, 17-21 years old, who are transitioning from foster care to independence. We equip them with the social, professional and self-sufficiency skills needed to succeed on their own. We help them understand the importance of continuing education as a positive solution to help them achieve their life goals.

## CULTURE COMPETENCE

### Bilingual Services

Child Link is the only bilingual foster service provider in Chicago's Pilsen area and provides services to many Spanish-speaking children and families. Our staff works hard to place Spanish speaking or bilingual children into foster homes that reflect their own communication needs.

Child Link also is a member of the Latino Consortium, where we partner with other child welfare agencies to organize resources and support for Latino families in Chicago and throughout Illinois.

Allowing families to participate in bilingual programs is an essential component to ensuring those in our care are prepared for success.

### Workforce Diversity

At Child Link, our workforce reflects the very diverse needs of our clients, which enables us to best serve them. Our staff provides unique perspectives, backgrounds and experiences, that enhance our vision and goals, and strengthens the quality of our services. Child Link values an inclusive environment in which all employees feel welcome and respected, thereby eliminating discrimination and injustice. Promoting an atmosphere of inclusion and diversity is an utmost priority for Child Link's continued success.

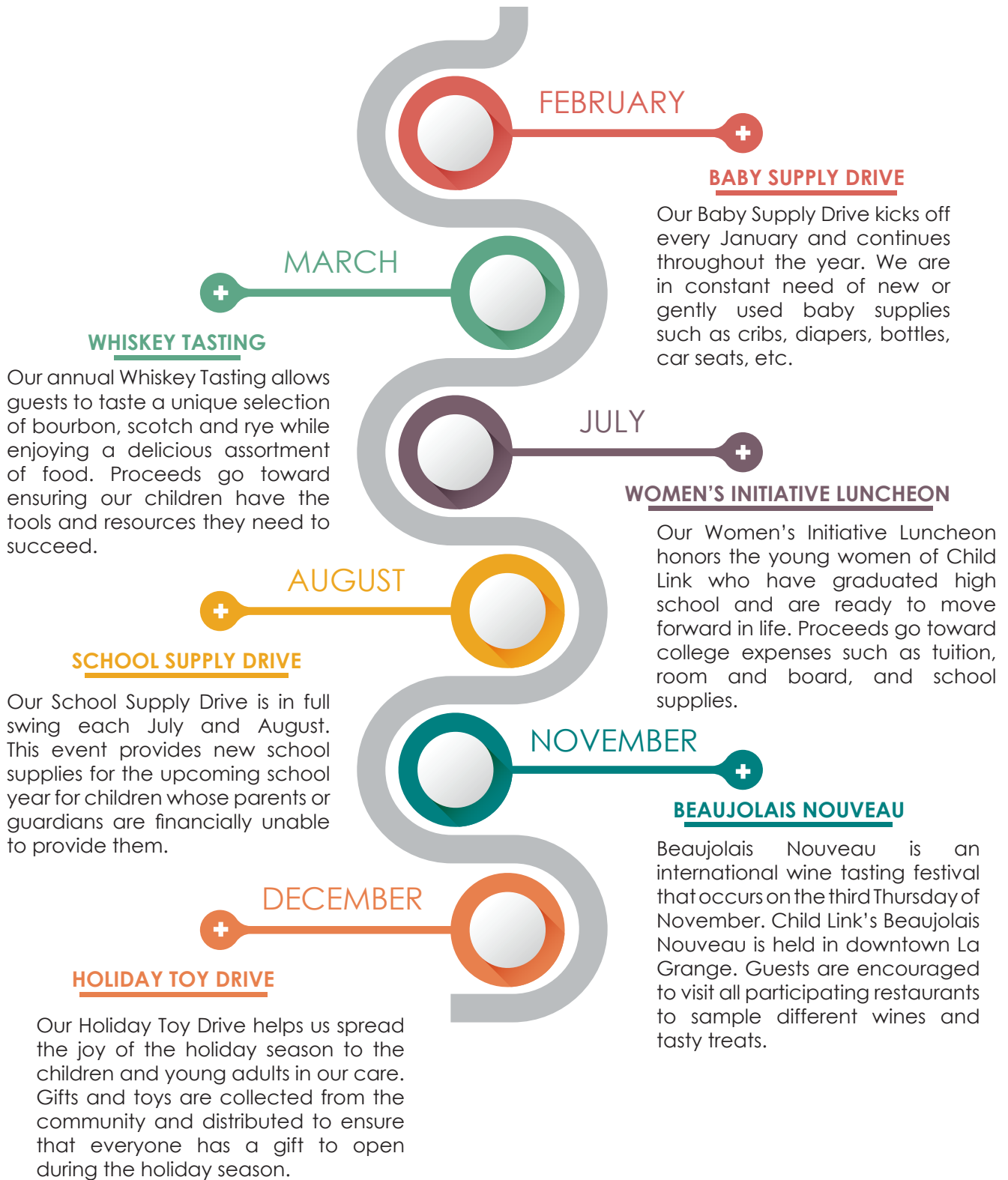
### Inclusion Policy

Child Link does not discriminate against classes of prospective Foster or Adoptive parents. It is not Child Link's intention or desire to make an ethical judgement on LGBTQAI relationships. We recognize that a person's sexual preference is not legitimate grounds on which to deny his or her civil liberties or fitness to parent a child in need of a caring home. Such classes and categories include gender, color, creed, race, religion, age, ethnic or national origin, political beliefs, socioeconomic status, disability, gender identity, marital status or sexual orientation.





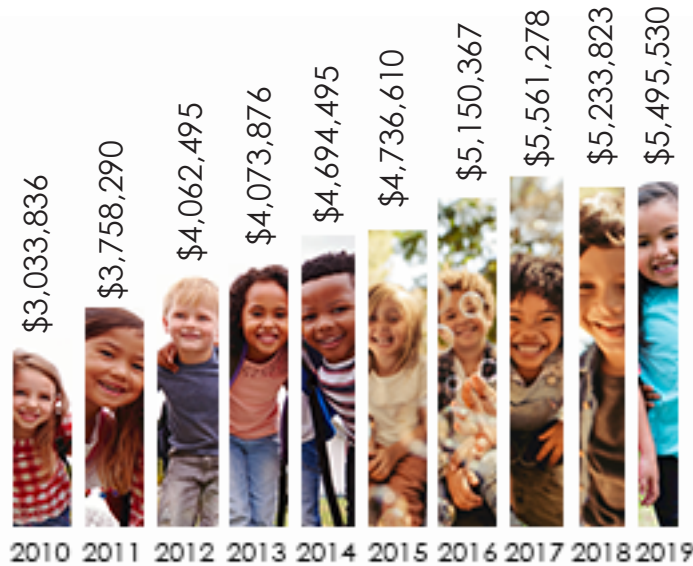
# ANNUAL EVENTS



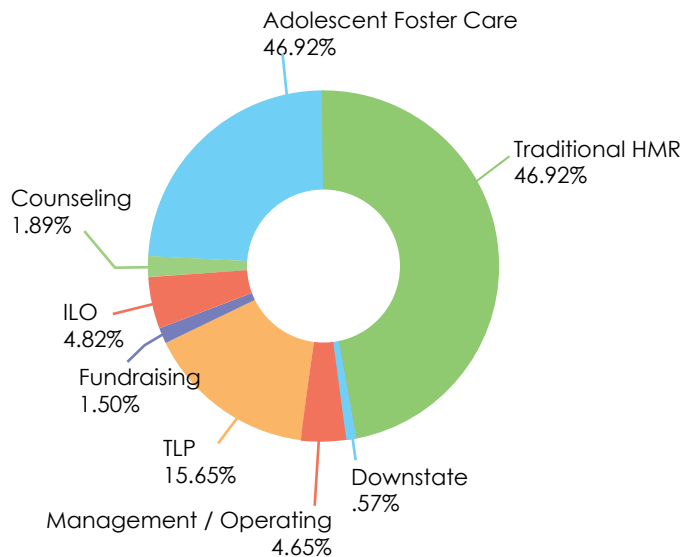
## OUR FINANCE GOALS

- Continue to operate according to our best practice standards.
- Provide the management team with program expenses and operational budgets.
- Maintain quarterly financial audits by the board of directors and weekly reviews by Child Link management.
- Work to ensure that all financial audits are clear.

### REVENUE BY YEAR



### OPERATING EXPENSES 2019



## OUR PROGRESS THROUGH 2019

In 2019, Child Link raised \$5.4 million and of that, \$5.1 million went to our programs and services that assist children and young adults under our care, from birth to 21 years old. Thanks to generous donations and in-kind contributions from donors, we continue to help children and young adults who need support.

Statement of Activities	2013	2019
Revenues		
Fees and Grants From Government Agencies	3,859,942	5,324,959
Contributions	179,632	169,789
Other Income	34,302	791
Total Revenues	\$4,073,876	\$5,495,539
Expenses		
Program Services	3,607,609	5,110,922
Management & General	345,417	174,998
Fundraising	10,452	168,073
Total Expenses	\$3,963,478	\$5,453,993
Net Income	\$110,398	\$41,546
Statement of Financial Position	2013	2019
Assets:		
Cash	306,775	94,629
Accounts Receivable	167,036	370,615
Fixed Assets		
Building/Improvements - TLP	999,630	1,655,559
Other Fixed Assets	13,646	162,966
Less Depreciation	(169,955)	(648,313)
Other Assets	13,617	76,792
Total Assets	\$1,330,749	\$1,712,248
Liabilities and Net Income:		
Accounts Payable		
Accrued Expenses	364,761	550,111
Other Liabilities	748,831	1,102,991
Total Liabilities	\$1,149,592	\$1,653,102
Total Net Assets	\$181,157	\$59,146
Total Liabilities & Net Assets	\$1,330,749	\$1,712,248

## **PLATINUM SPONSORS**

Bryne Bryne and Company  
Intercontinental Hotel  
Meagher, Michael  
Olsen, Geoff  
Rebello, John  
The Option Cleaning Corporation  
Together We Rise Corporation  
Trustmark

## **GOLD SPONSORS**

Accenture  
Boodell & Domanskis  
Coyote Logistics  
Jack DaDan  
Early Warning Services  
Lockett, Dania  
Mihman, Cheryl

## **SILVER SPONSORS**

Aim Specialty Health	Mars Wrigley
Barrel House Social	Mitchell and Titus
Bottle & Bottega	NSLC
Fourteensixteen	Nickson's Eatery
Hoover, Angela	Orthodontic Experts
Hughes, Jawanza	Patel, Parag
Kama Bistro	Poplowska, Aleksandra
La Buona Vita	Stadium
Lerner & Rowe	Steak + Vine

## FRIENDS OF CHILD LINK

Abboreno, Sarah  
 Ablerico, Marc  
 AEGIS  
 Albrecht, Joerg  
 Alexander, David  
 Alixandra Collections  
 Al's Char House  
 Amazon Smile  
 Anthony, Debra  
 Aroma Workshop  
 Arnett, Malia  
 Bannor, Beth  
 Barnard, Christine  
 Barnwell, Andrea  
 Barret, Candice  
 Baumbach, Christian  
 Bears Community  
 Relations  
 Becker, Rosaria  
 Bednar, Alexandra  
 Bell, Sandra  
 Benny's Chop House  
 Blacno, Ervin  
 Bloom Yoga Studio  
 Boyle, Patrick  
 Bragdon, Steven  
 Brems, Julie  
 Bright, Jessica  
 Brofman, Becky Beyer  
 Brookhaven  
 Marketplace  
 Brown, Crystal  
 Brown, Michael  
 Burstein Moto, Katy  
 Butkus, Anthony  
 Cahill, Jody  
 Callanan-Uhl, Carol  
 Calvert, Kathleen  
 Caputo, Nicholas  
 Carney, Karin  
 Casa Margarita  
 Ceannate  
 Cervantes, Martin  
 Cha, Christina  
 Charles A, Krugel, Labor &  
 Employment Law  
 Chicago Bears  
 Chicago Hotel  
 Chicago Pizza Tour  
 Chicago White Sox  
 Christen, Kim  
 Christina, Happel B.  
 Clark, Bess  
 Cole's Bar  
 Collis, Dave  
 ComEd  
 Conley, Muna  
 Conroyd, John  
 Continental Nissan  
 Corporate Concierge  
 Cosky, Elli  
 Costello, Kieran  
 Costello Kieran  
 Covey, Elizabeth  
 Crawford, Brad  
 Curtis Flagg Shaw  
 Cychosz, Allison  
 DaDan, Kate  
 Dallia, Catherine  
 Davis, Aisha  
 Davis, Corina  
 Davis, Michelle  
 Davys, Michelle  
 Deadn, Ronald  
 Dean, Ronald  
 DeRose, Karen  
 Dickeson, Bob  
 Djordjevic, Nada  
 Doherty, Michele  
 Doig, Nicole  
 Donovan, Chris  
 Douglas, Melanie  
 Draine, Victor  
 East Bank  
 Club  
 Eck, Rosemarie  
 Eilbert, Wesley  
 Elder, Justin  
 Ellingsen, Melissa  
 Empirical Brewery  
 Engle, Andrew M.  
 Eyer, Connie  
 Ferguson, John  
 Field Museum  
 Fielder, Tanger Marier  
 Fisher, Joyce  
 Five Below  
 Fox, Alisha M.  
 Flynn, Edward  
 Freund, Lisa  
 Fuchs, Elizabeth  
 Fuller, Terra  
 Ganzel, Mary  
 Gap Foundation  
 Garcia, Caesar  
 Gates, Katherine  
 Gayles, Donna  
 Geraghty, Peggy  
 Gignac, Annmarie  
 Gilpin, Aileen  
 Glick, Janet  
 Glory Global Solutions  
 Godziak, Paula  
 Graziano, Diane  
 Groff, Cristina  
 Grimes, Denise  
 Grove, Jacqueline  
 Grzeca, Ernie  
 Hackler, Laurie  
 Hall, Skyla  
 Hanley, Caitlin  
 HBR Consulting  
 Hebipasi, Elta  
 Heller, Christian  
 Henninger, Erin  
 Herman, Thomas  
 Hernandez, Hilda I.  
 Hickey, Ann-Marie  
 Hiestand, Meg

Hit Locker  
 Hoover, Angela  
 Hunt, Susan  
 Hutchinson, Penny  
 Hyatt Hotel O'Hare  
 James, Michelle  
 Jayne Boutique  
 Jayner, Danetta  
 Jensen, Eric  
 Jensen, Tracy  
 Jeppen, Gary  
 Johnson, Steven  
 Jones, Paul  
 Joynder, Danetta  
 Justes, Hailey  
 Keating, James  
 Kehring, Sarah  
 Kendrick, Freyja  
 Kennedy, Mary  
 Khatib, Amal  
 Kickstand Productions  
 Kiddie Academy  
 Kohl Children's Museum  
 of Greater Chicago  
 Koziol, Emily  
 KPMG Gives  
 Knupp, Jason  
 Krikorian, Pamela  
 Krugel, Charles  
 Kuehl, Nikki  
 Kurowski, Kathryn  
 Kuznetsoua, Darya  
 Lake Geneva Canopy  
 Tours  
 Lannan, Patricia  
 Larson, Amelia  
 Laugh Factory  
 Leechuy, Jasmine  
 LeSure, LaShanta  
 Liberty Mutual Foundation  
 Match  
 Levato, Tommaso

Lipman, Nancy  
 Lloren, Teresa  
 Logan, Paige  
 Lou Malnati's  
 Luft, Courtenay  
 Lussi, Ena  
 Maharam  
 Malkinson, John  
 Manrique, Michael  
 Mansfield, Foley  
 Marciniak, Tom  
 Mariner Wealth Advisors  
 Mariyappa, Jayanth  
 Marshall, Christine  
 Martin, Leilani  
 Mattax, Rose  
 Mazur, Catherine  
 MB Financial  
 McCourt, Julie  
 McDonnell, Collen  
 McGivney, Eileen  
 McWilliams, Julie  
 Meagher, Marie  
 Medinger, Robert  
 Metz, Dana  
 Michelotti, Dana  
 Miramontes, Marisol  
 Mitchell, Alison  
 Mladic, Tricia  
 Molina, Michael  
 Monge, Katie  
 Monreal, Frank  
 Moore, Cheryl  
 Movidia, Anna  
 Much Shelist  
 Myburgh, Elizabeth  
 Nadle, Lisa  
 Nava, Ray  
 Navigant Consulting  
 Near North Tile Group  
 Neehan, Ted  
 Ness-Bross, Mary

Network For Good  
 Neuland, Bert  
 Neuland, Deborah  
 Neumann, Richard  
 Nevis, Daniel  
 Nizum, Tracy A.  
 Oak Lawn - Cicerco US  
 Bank  
 Okeson, Eric  
 Olivaceto  
 Packard, Jacqueline  
 Palmer, Daniel  
 Paper Source  
 Pawluk, Markian  
 Perez, Jackie  
 Perkovich, Brian  
 Perry, Lisette  
 Pheasant Run Resort  
 Pietrzak, Jim  
 Porchlight Music Theatre  
 Porter, Jon  
 Potter, Elizabeth  
 Pozen, Denise  
 Prasad, Ashoke  
 Preston, Rebecca  
 Price, Danny  
 Price, Molly  
 Primal Oceans Salt Cave  
 Raatz, Lisa  
 Regio, Bruno  
 Reinhold, Kavitha  
 Renaissance  
 Charitable Foundation  
 Reynolds, David  
 Rhoads, Jennifer  
 Riechelmann, Renata  
 Rodda, Sandie  
 Romanoski, Susan  
 Rosario, Neil  
 Sansone, Pamela  
 Santiago's  
 Sayre, Meredith  
 Scanlon, Barbara

Schell, Gerda  
 Schoenheider, Diane  
 Schwartz, Susan  
 Seter, Mark  
 Sherwood, Jerry  
 Silguero, Serena  
 Simon, Craig  
 Solatka, Colette  
 Solatka, Matthew  
 Soto, Carolina  
 Spada, Gina  
 Spears, Anthony  
 Spencer, Jill  
 Spenser, Clay  
 Sprague, Don  
 Sprinkles Cupcakes  
 Sraga, Kathy  
 Steak + Vine  
 Sullivan, Rose  
 Syrup, Krista  
 Sziler, Jeannette  
 Taggie, Nic  
 The Option Vlearing Cor-  
 poration  
 Tooker, Chelsea  
 Torres, Natalie  
 Trela, Maryclare  
 Trela, Tim  
 Trevick, Stephen  
 Traux, Mark  
 Van Gemmeren, Cathe-  
 riine  
 Vitaloa, Harwell, Tracy  
 Vondra, Barbara J.  
 Vuyk, Katrina  
 Wagner, Ryan  
 Waldron, Jason  
 Walter, Sue  
 Waters, Mary  
 Watkins, Tanesha  
 Weinberg, Arnold  
 West Suburban Women  
 Entrepreneur  
 Whiskey Acres  
 White, June F.  
 Wiers, Nathan  
 Wolf, Katherine T.  
 Wolfbait & B-Girls  
 Young, Krista M.  
 Zimmerman, Judy  
 Zwick-Nevis, Mary



Tel: (312) 377-4735 | Fax: (312) 377-4888 | Email: [info@childlnk.org](mailto:info@childlnk.org) | Web: [www.childlnk.org](http://www.childlnk.org)

Address: 955 W Cermak Road, Chicago, IL 60608

